

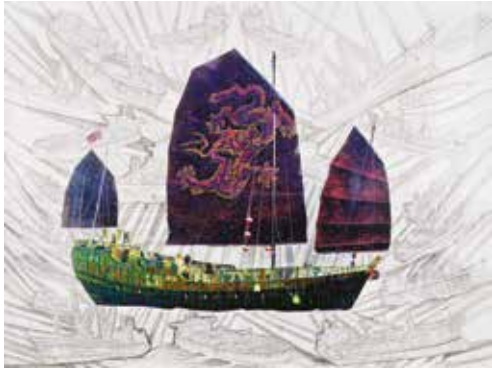
# IKON

Exhibitions / Events  
March – June 2019  
[ikon-gallery.org](http://ikon-gallery.org)  
Free entry



# Hew Locke: Here's the Thing

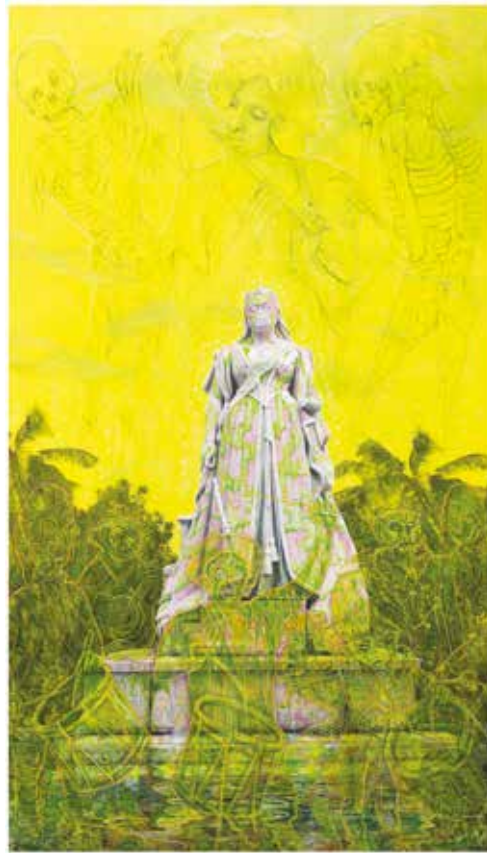
Exhibition  
8 March – 2 June 2019  
First and Second Floor Galleries



1

This is the most comprehensive exhibition to date of work by British artist Hew Locke. Involving a wide range of media – painting, drawing, photography, sculpture and installation, Locke explores the languages of colonial and post-colonial power, and the symbols through which different cultures assume and assert identity. Fusing historical source material with a keen interest in current affairs, often through the juxtaposition or modification of existing artefacts, Locke focuses attention especially on the UK, the monarchy and his childhood home of the then newly independent Guyana.

Through appropriating coats of arms and trophies, weaponry, naval warships, public statuary and the costumes and regalia of state, Locke subtly critiques governmental authority, its iconographies and legacies. His *Souvenir* series of royal busts, including *Souvenir 1 (Queen Victoria)*, (2018), are presented alongside re-workings of antique share certificates, obsolete documents referring to the turbulent history of colonial economies and their exploitative nature.



2

In *Hinterland* (2013), a reworked photograph of a statue of Queen Victoria in Georgetown, Guyana, Locke hints at the country's tumultuous relationship with its past. Removed in 1970 and dumped in the undergrowth of Georgetown's Botanical Gardens, the statue was subjected to a kind of dethroning, symptomatic of Guyana's then burgeoning socialist republic, only to be reinstated in 1990 in front of the city's Supreme Court of Judicature.

Ships and boats recur through the galleries as leitmotifs for the exhibition. Carriers of countless possible meanings, evoking centuries of warfare, trade and strategies of cultural imperialism, they also hold personal significance for the artist: "Here's the thing: Guyana means 'land of many waters' – you are constantly aware of boats. I went to Guyana as a five-year-old kid on a boat. I came back here on a boat. So many things, good and bad, travel by sea."

Video installation *The Tourists* (2015) recasts Locke's artistic intervention on board the British battle



3

cruiser HMS Belfast. Active in the Korean War as well as World War 2, HMS Belfast visited the Caribbean in 1962, stopping at Trinidad on its final voyage. Locke conjures up an alternative history for the on-board museum mannequins, where we see them preparing costumes and props to take part in the Trinidad Carnival. The satirical gesture hints at an "exotic" alternative to the regimented daily life of sailors, whilst reminding us that ships launched in the name of western democracy and "civilisation" were essentially vehicles for unfair trade.

The finale of the exhibition presents a flotilla of customised boats, comprised of a mixture of new ships and those featured in the installation *On the Tethys Sea* (2017), first shown in the Diaspora Pavilion in Venice. Suspended from the gallery ceiling, intricate decorations, talismans and greenery adorn these empty vessels – with crew and passengers as absent presences – immersing visitors in a submarine environment, at once dreamlike and poignant.

*Hew Locke: Here's the Thing* will take place at Kemper Museum of Contemporary Art, Kansas City, Missouri (12 September 2019 – 19 January 2020) and Colby College Museum of Art, Maine (February – June 2020). The exhibition is accompanied by a catalogue published by Ikon Gallery, Kemper Museum of Contemporary Art and Colby College Museum of Art.

Cover	Hew Locke <i>Souvenir 1 (Queen Victoria)</i> (2018) Mixed media on Copeland Parian bust Courtesy the artist Photograph by Angus Mills
1	Hew Locke <i>Huan Tian Xi Di</i> (2016) Acrylic paint on c-type photograph Courtesy the artist
2	Hew Locke <i>Hinterland</i> (2013) Acrylic paint, ink and pen on c-type photograph Courtesy Hales Gallery, London & New York Photograph by Charles Littlewood
3	Hew Locke <i>The Tourists</i> (2015) Courtesy The IWM, London Photograph by Charles Littlewood

# Associated Events

## Exhibition Opening

**Hew Locke: Here's the Thing**

**Friday 8 March, 6–8pm – FREE**

Join us to celebrate the opening night of Hew Locke's new exhibition. Pay bar.

## Talks

**Hew Locke in Conversation**

**Saturday 1 June, 6–7pm – £3**

**Booking essential**

Artist Hew Locke discusses his Ikon exhibition with Hammad Nasar, Executive Director of the Stuart Hall Foundation.

## Film

**Burden of Dreams presented on 16mm**

**Wednesday 1 May, 6–8pm – £8**

**Booking essential**

**The Mockingbird, Custard Factory, B9 4AA**

For Hew Locke, Werner Herzog's *Fitzcarraldo* (1982) is an "iconic film about artistic obsession; the hero's with opera, and the director's with film, both encapsulated in the central image of a steam ship being moved over a high hill, a feat achieved without special effects. This is dramatically re-emphasised by Les Blank's film *Burden of Dreams* (1982), documenting the chaotic making of *Fitzcarraldo* in the Amazon, in an atmosphere of deadly pressure." Tickets from [flatpackfestival.org.uk](http://flatpackfestival.org.uk). Presented in partnership with Flatpack Festival and the British Film Institute.

**Book online at [ikon-gallery.org](http://ikon-gallery.org) or call 0121 248 0708.**



## Walk

**Redressing Victoria**

**Friday 24 May, 12–2pm – £8**

**Booking essential**

**Meet at the Statue of Victoria, Victoria Square**

To mark the bicentenary of Queen Victoria's birth, join us to trace the history of Birmingham's bronze statue, originally commissioned by Henry Barber and sculpted in marble by Sir Thomas Brock. We return to Ikon for a tour of *Here's The Thing* with artist Hew Locke and a screening of Mitchell and Kenyon's film *Return of the Royal Warwickshire Regiment* (1901) featuring the marble original.

## Festival

**The Migrant Festival**

**30 May – 2 June**

For the final four days of Hew Locke's exhibition, *The Migrant Festival* returns to celebrate our diverse roots, welcoming new arrivals to the city. This year's programme includes designer Osman Yousefzada's fashion parade, a performance by Syrian Ood Player, Rihab Azar from Celebrating Sanctuary and a tour of the Midland Arts Centre (MAC) exhibition *Handsworth Self Portrait: 40 Years On* (23 March – 2 June). Please check Ikon's website for further programme details.

# Other Exhibitions

4 Lin Ke  
*Fly* (2016)  
Courtesy the artist



## Lin Ke

### *Fly*

Exhibition

8 March – 2 June

Tower Room, Second Floor

Please note the Tower Room is only accessible via a number of steps

*Fly* (2016) is a recent performance video by Lin Ke. Screened in our Tower Room, it features this young Chinese artist facing a laptop camera, his meditative position foiled by the irritating movement of his mouse cursor as if it were a flying insect. Working within the boundaries of his computer desktop, the artist is at the same time networked into a globalised virtual world where there is trouble in paradise. Lin Ke was nominated for the Nam June Paik Art Center Prize in 2018.

## Matthew Krishanu

### *A Murder of Crows*

Exhibition

Until 10 March 2019

Ikon Ground Floor

Mischievous, malevolent and sometimes comical, Matthew Krishanu's painted birds are partly inspired by crows in art and literature; for example *Crow* by Ted Hughes, Edgar Allan Poe's raven, or the mythical crows of trickster tales. They are also signifiers of Krishanu's childhood in Bangladesh where crows were always close by, cawing in trees or pecking at rubbish dumps.

# Discuss, Explore, Learn, Create

## Talk

**Chai and Chat**  
**Sunday 10 March, 3–4.30pm**  
**£5, includes tea and cake**  
**Booking essential**  
**Yorks Café at Ikon**

In association with Sampad South Asian Arts and Heritage, artist and documentary photographer Shaista Chishty hosts *Chai and Chat*, an informal discussion to share thoughts on writing, poetry and spoken word. Shaista will reflect on her own practice which explores identity, representation and notions of otherness, particularly of Muslims in Britain. *Chai and Chat* is a women's focussed initiative, however this event is open to all.

## Book Launch

**Brazilian Performing Arts**  
**Thursday 14 March, 6–7pm – FREE**  
**Booking essential**

Aleksandar Dundjerovic, Professor of Performing Arts, Royal Birmingham Conservatoire, discusses critical topics relating to Brazilian interdisciplinary performing arts and theatre creative process from his latest publication, *Brazilian Performing Arts* (2019). This event will be followed by a book signing in Ikon shop.

Book online at [ikon-gallery.org](http://ikon-gallery.org) or call us on 0121 248 0708.

Group visits, tours and creative workshops are available for each exhibition. For more information visit [ikon-gallery.org/learning](http://ikon-gallery.org/learning) or call the Learning Team on 0121 248 0708.

All events take place at Ikon Gallery unless otherwise stated.



5

## Workshop

**Tactile Geometries**  
**Saturday 23 March, 11am–3.30pm**  
**£10, includes tea, cake and talk ticket**  
**Booking essential**

Join artist Giulia Ricci for a workshop in drawing and explore the geometry and texture of our architectural environment. Ricci attended the Slade School of Art, where she met her friend and mentor, artist Tess Jaray. Following the workshop, we walk to the Barber Institute of Fine Art for Jaray's exhibition and in conversation event with Ikon's Director, Jonathan Watkins.

## Tours

**Spotlight Tours**  
**Every Friday, 12.30pm and Sunday, 3pm – FREE**  
Join a member of Ikon staff for a 15 minute spotlight tour focused on a key work in the exhibition. No need to book, meet in Ikon foyer.

**Access Tours**  
**Available on request – FREE**  
**Booking essential**

Ikon can provide British Sign Language (BSL) and audio described introductions to our current exhibitions. Individual or group bookings are free but must be booked. Call Ikon on 0121 248 0708 or email [learning@ikon-gallery.org](mailto:learning@ikon-gallery.org)

# Family Events



## Free Drop-in Activities

**Suitable for all ages. No need to book, stay for as long as you like.**

**Family Saturday**  
**Saturday 6 April, 12–4pm – FREE**  
**Saturday 4 May, 12–4pm – FREE**  
**Saturday 1 June, 12–4pm – FREE**

Join our Learning team for creative, hands-on activities inspired by Hew Locke's exhibition. Spend time making and experimenting as a family, focussing on drawing and portraiture. Family Saturdays include activities throughout Ikon's galleries, including a story corner.

**Art Explorer**  
**During Exhibitions – FREE**  
**Available at reception**

Explore the galleries with your family and friends using our specially designed riso-printed guide. This fun guide includes questions related to the exhibition and drawing activities.

**Starry Night**  
**Tuesday 23 – Thursday 25 April, 11am–4pm – FREE**  
**Drop in, no need to book**

Get creative this Easter by building an architectural installation from masses of recycled cardboard. Ikon's Laurie Ramsell assisted Hew Locke on the installation of *Starchitect* (2011) and joins our Family Team for the build. Most suitable for children over five, though younger family members are welcome.

## Bookable Family Workshop

**A Journey of Stories**  
**Friday 26 April, 11am, 1pm and 3pm, £2**  
**Booking essential**

Inspired by Hew Locke's exhibition, we invite families to enjoy the magic of storytelling as we gather to hear tales of journeys and hope with local storyteller Cath Edwards. Sessions last approximately one hour and include a drink and snack. Suitable for children over 5 accompanied by an adult, though younger family members are welcome.

5 Tess Jaray  
*Glimpse* (2017)  
© Tess Jaray, 2019, all rights reserved  
Courtesy of Karsten Schubert, London

**Children must be accompanied by an adult at all times. When booking indicate children's ages.**

# Ikon *Slow Boat*

## 20 years on the canals

Ikon approaches its twentieth year of working on Birmingham's historic waterways. Past projects have varied enormously in scope and scale, collaborating with artists from across the globe. In 2000, Tadashi Kawamata worked with a group of local people to convert the hull of an ex-commercial narrowboat into a new installation. Simon and Tom Bloor's geodesic canopy, painted in a dazzle ship design on a working canal boat (*Hey for Lubberland!*, 2009), provided shelter for passengers to browse an on-board library specialising in utopian design.

In 2011, Ikon launched *Slow Boat*, a converted narrow boat and unique floating space for local communities and artists to make and experience art in a stimulating and creative environment. *Slow Boat* is curated by Ikon's Learning Team with members of Ikon Youth Programme (IYP).



## Artists in Residence

As part of Ikon's three year programme in Ladywood, *Looping the Loop* (2017–2019), Matthew Krishanu and *idle women* join us as *Slow Boat* residents for a season of discussions and events.

### Meet the Artist – Matthew Krishanu

**Friday 8 March, 4–6pm – FREE**

**Drop in, no need to book**

**Slow Boat, Brindleyplace**

As his exhibition *A Murder of Crows* draws to a close, join artist Matthew Krishanu and Ikon's Learning Team onboard *Slow Boat* for an informal social event where the artist will talk about his source material and sketches.

### All Things Covid

**Saturday 9 March, 2–3pm – FREE**

**Booking essential, limited capacity**

**Slow Boat, Brindleyplace**

Matthew Krishanu is joined by artist and educator Henry Ward and Jake Williams, Community Engagement Officer, The Wildlife Trust for Birmingham and the Black Country for a discussion disclosing their obsession with crows.

### Meet the Artists – *idle women*

**Wednesday 1 May, 3–5pm – FREE**

**Booking essential**

**Slow Boat, Brindleyplace**

*idle women* create vibrant and adventurous spaces with women and girls in places where they are least imagined. Meet founders Rachel Anderson and Cis O'Boyle for an informal discussion about *on the water*, their slow touring canal project in Lancashire and West Yorkshire. They will be joined by artist Beth Derbyshire and Boatel owner and skipper Saima Razzaq to discuss women on the waterways and cultural identity.

### The Physic Garden

**Thursday 2 May, 6–7pm – £3**

**Booking essential**

**Winterbourne House & Garden, B15 2RT**

Join Rachel Anderson and Cis O'Boyle for a conversation with writer, horticulturalist and President of the Herb Society, Alys Fowler about physic gardening; a strand of horticultural practice dedicated to medicinal herbs used by women for centuries. In partnership with Winterbourne House & Garden.



6

## Canal Events

### Fermentations: Remembering Cucumbers

**Workshop: Sunday 14 April, 2–4pm**

**Producers Lunch: Sunday 12 May, 1–3pm**

**£20 for both events**

**Booking essential, limited capacity**

**Slow Boat, meet at Ikon**

In 2000, Japanese artist Shimabuku embarked on a two week canal boat journey from London to Birmingham – the duration of which was used to pickle cucumbers. In a nod toward this, join artist Kirsty Clarke for a two-part pickling and fermenting workshop. Learn the art of using 'controlled decay' to transform foods and taste the rich, complex results as we cruise past the remnants of Birmingham's industrial past, citing fermentation as a political act against mass production and consumerism.

**Find location information for *Slow Boat* and book online at [ikon-gallery.org](http://ikon-gallery.org) or call us on 0121 248 0708.**

### International Dawn Chorus

**Friday 10 May, 4.15am – £10**

**Booking essential, limited capacity**

**Slow Boat, meet at Ikon**

Listen to native and migratory bird species singing along Birmingham's canals. This magical chorus is introduced by Jake Williams, Community Engagement Officer, The Wildlife Trust for Birmingham and the Black Country, whilst sound artist Duncan Chapman will record the chorus to be played back along the canals as *Slow Boat* makes its return journey. Pastries and refreshments included. Presented in partnership with The Wildlife Trust for Birmingham and the Black Country.

# Ikon Youth Programme



Ikon Youth Programme (IYP) is a group of young people, aged 16–21 years, who share an interest in visual art. IYP meets once a week at Ikon to tour exhibitions, get to know the Ikon team, share ideas and work with artists. These sessions are relaxed, friendly and informal. For more information contact James Latunji-Cockbill on 0121 248 0708 or visit [ikon-gallery.org/iyp](http://ikon-gallery.org/iyp)

Book online at [ikon-gallery.org](http://ikon-gallery.org) or call us on 0121 248 0708.

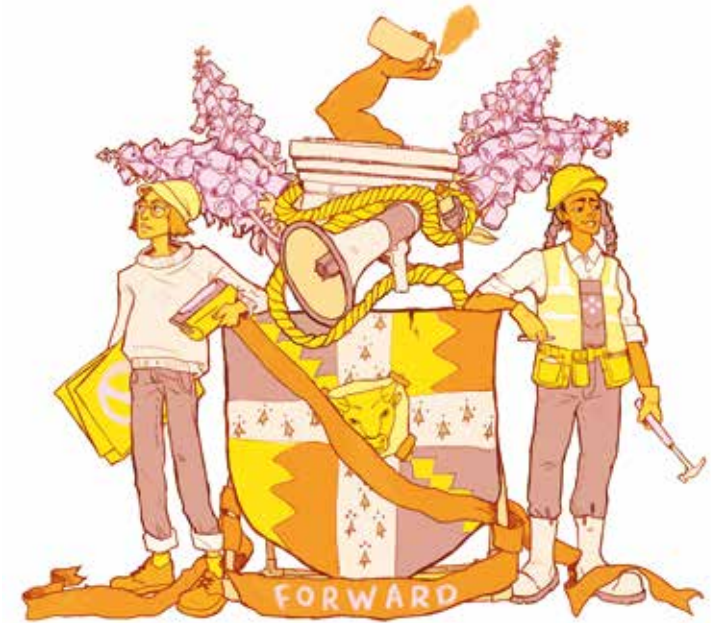
**Canalside Forage and Feast**  
**Wednesday 22 May, 10am–4pm – £45**  
**Booking essential**  
**Meet at Ikon**

Join IYP and James Wood (Totally Wild UK) for an in-depth day of canalside foraging. Starting with a welcome of wild teas, coffees, scones and jams, foragers will discover a vast array of wild edibles and try up to 30 pre-made tasters from infusions to chutneys, pickles, syrups, salts and herb mixes, before harvesting a range of ingredients to cook and eat a delicious lunch.

**To hew/to cut/to canal**  
**Throughout May 2019**

Ikon Youth Programme and Barber Collective produce work with textile artist Jane Thakoordin in response to Hew Locke's exhibition and the decolonisation of art collections. The project culminates with an intervention on *Slow Boat*, as part of *The Migrant Festival* in June. Organised in partnership with the Barber Institute of Fine Arts.

# Off-site



## Perry Roberts *the seasons*

Installation  
Until 30 March 2019  
Selfridges  
The Bullring, B5 4BP

Belgium-based British artist Perry Roberts works in a variety of media including painting, furniture and wall drawings. *the seasons* is a new text-based installation, reflecting on our experience of the seasons: fragmented and mixed up, it not only suggests the effects of climate change but raises questions concerning the nature of fashion. This latest commission launches a partnership with Selfridges for their State of the Arts campaign, which explores the power of art in unexpected places.

7 Katharine Wade *Forward* (2018)  
Courtesy the artist

## *Forward:* *New Art from* *Birmingham*

Exhibition  
Until 24 March 2019  
Open daily, 10am–6pm  
Medicine Bakery and Gallery  
69 New Street, B2 4DU  
Please note Medicine Bakery is only accessible via a steep staircase

Now, more than ever, Birmingham's artistic community is thriving. *Forward: New Art from Birmingham* is a group exhibition by artists, living and working in this city, to highlight the depth and vitality of a wide range of practices. Taking place in Medicine, the old gallery space of the Royal Birmingham Society of Artists, from which sprang the young generation that founded Ikon more than 50 years ago, it couldn't be more in keeping with their progressive ethos, still informing our artistic programme to this day.

# Future Exhibition

8 Anya Gallaccio  
Installation view, Ikon Gallery (2003)



# Ikon Shop



## The Aerodrome

An exhibition dedicated to the memory of Michael Stanley

12 June – 8 September 2019

This exhibition is presented in memory of Michael Stanley, Curator at Ikon before becoming Director of Milton Keynes Gallery and then Modern Art Oxford, who tragically died in 2012. Co-curated with David Austen and George Shaw and structured loosely on Rex Warner's war-time novel *The Aerodrome* (1941), a book that made a great impression on Stanley, it includes many of the artists he worked with.

A group show, *The Aerodrome* fills Ikon's premises entirely and is organised with Stanley as a presiding spirit; a celebration of an extraordinary vitality that continues to make a deep and lasting impression.

9  
**Space\_Play Ikon model**  
Hand cast concrete sculpture, £45

10  
**Polly Apfelbaum poster**  
Available in four designs, £10 each

11  
**Cornelia Parker**  
**STOP (2015)**  
Embossed enamel sign, edition of 20, £1,000

**Ikon Shop**  
Open daily, 10.30am–5.30pm  
Shop online at [ikon-gallery.org](http://ikon-gallery.org)  
Follow Ikon Shop's products of the week on Instagram @ikongallery

# About Ikon

Ikon is an internationally acclaimed contemporary art venue situated in central Birmingham. Housed in the neo-gothic Oozells Street School, it is an educational charity and works to encourage public engagement with contemporary art through exhibiting new work in a context of debate and participation.

The gallery programme features artists from around the world. A variety of media is represented, including sound, film, mixed media, photography, painting, sculpture and installation.

Ikon's off-site programme develops dynamic relationships between art, artists and audiences outside the gallery. Projects vary enormously in scale, duration and location, challenging expectations of where art can be seen and by whom.

Education is at the heart of Ikon's activities, stimulating public interest in and understanding of contemporary visual art. Through a variety of talks, tours, workshops and seminars, our Learning Team aims to build dynamic relationships with audiences, enabling visitors to engage with, discuss and reflect on contemporary art.



# Ikon Shop



Open daily, you'll find a wide selection of art books, exhibition catalogues and design led giftware suitable for all occasions, alongside seasonal ranges and unique items made in Birmingham.

Students, Independent Birmingham, Brindleyplace, Culture Card, and MyBull keyring holders receive a 10% discount (conditions apply).

Alternatively browse our shop online at [ikon-gallery.org](http://ikon-gallery.org)

Follow Ikon Shop's products of the week on Instagram @ikongallery

For offers and news of our latest products sign up to the Ikon email list via the website.



# Yorks Café at Ikon

Visit Yorks Café at Ikon for own-roasted coffee (roasted at Yorks Coffee Roasters here in Birmingham), house-baked cakes, loose leaf teas, craft beers on tap, wine and cocktails. Enjoy Yorks' renowned brunch, lunch and later menu including shakshuka, Arabian buttered eggs and avocado smash alongside familiar favourites such as eggs benedict, flatbreads, sandwiches and salads. Visit [yorkscafe.co.uk](http://yorkscafe.co.uk) for menu details, opening times and events.

# Thank you

## Ikon would like to thank the following for their invaluable support over the past 12 months

The Ampersand Foundation; ARTiMBARC; The Arts Club; Birmingham City University; Canal & River Trust; Embassy of the Czech Republic in London; Dazed; Leila Elling; Elonex; Flatpack Film Festival; Hilton Garden Inn Brindleyplace; Glenn Howells Architects; Grantham Yorke Trust; Henry Moore Foundation; Historic England; HMP Grendon; Japan Foundation; Peter Jenkins; Stephen and Sigrid Kirk; Lisson Gallery; London College of Fashion; Medicine Bakery and Gallery; Marie-Louise von Motesiczky Charitable Trust; Saco Serviced Apartments; Selfridges; The University of Birmingham and others who wish to remain anonymous.

## Support Ikon

As a charity, Ikon needs your support. We rely on donations from individuals and businesses to fund what we do. If you would like to donate, become a patron or leave a legacy, call 0121 248 0708 or visit [ikon-gallery.org/support](http://ikon-gallery.org/support).

## Corporate Patrons

ARTiMBARC; Deutsche Bank; Emmerson Press; EY; Glenn Howells Architects.

Copyright Ikon Gallery and artists. Printed in Warwickshire by Emmerson Press, an ISO 9001 and 14001 certified print company.

## Individual Patrons and Benefactors

Paul Aston; Lulu Badr; Adrian Bland; Simon Chapman; Angela Choon; Thomas Dane; Jean Denning; Victoria Denning; Carl & Didi Forster; Robert Goddard; Patzi Haslimann; John Hayes; Ian Hyde; Peter Jenkins; Tom Jones; Masood Khan; Stephen and Sigrid Kirk; Jeanette Koch; David and Mary Lodge; Oliver Longmore; Tom Merilion; Simon Morris; Stephen Pallister; Jasmin Pelham; Sam Skillings; Mr & Mrs A E Taylor; Jonathan Watkins; Jonathan Wearing; Greville Worthington, Tricia Wright.

**Ikon is supported using public funding by Arts Council England and Birmingham City Council. Ikon would also like to thank all those who make a donation during their visit.**

**Ikon Gallery Limited trading as Ikon. Registered Charity no. 528892**

## Exhibition supporters


Exhibition supported by the Ikon Investment Fund and organised by Ikon Gallery, Kemper Museum of Contemporary Art and Colby College Museum of Art.


## Project and Event supporters


Ikon's Learning Programme is supported by Arts Connect West Midlands, Birmingham City University, Cass Art and The Rowlands Trust. Ikon's *Slow Boat* programme, *Looping the Loop*, is supported by Arts Council Strategic Touring, Michael Marsh Charitable Trust, W.A. Cadbury Trust, Sandwell Metropolitan Borough Council, Canal & River Trust and Grantham Yorke Trust. Artist in Residence at HMP Grendon is supported by Marie-Louise von Motesiczky Charitable Trust.



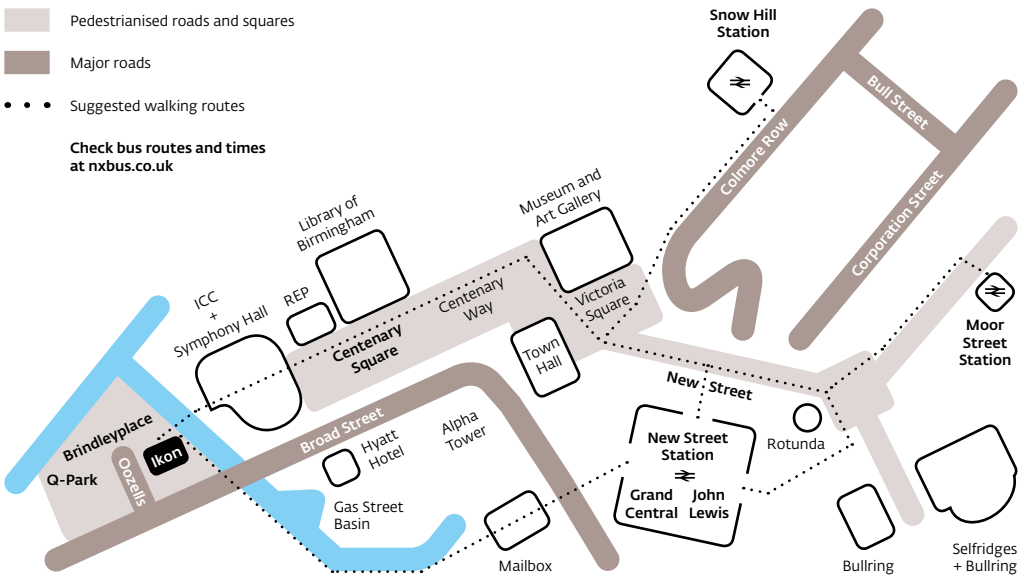


 Pedestrianised roads and squares

 Major roads

 Suggested walking routes

Check bus routes and times  
at [nxbus.co.uk](http://nxbus.co.uk)



## Ikon Gallery

1 Oozells Square, Brindleyplace, Birmingham B1 2HS

+44 (0) 121 248 0708 / [ikon-gallery.org](http://ikon-gallery.org)

   [ikon-gallery](https://www.ikon-gallery.org)

## Galleries open

Galleries closed 25 February – 7 March 2019 for installation.

## Ikon Shop open

Daily 10.30am–5.30pm.

## Yorks Café at Ikon open

Daily, please check [yorksbakery.co.uk](http://yorksbakery.co.uk)

**Ikon is a charity and offers free entry for all, please consider making a donation during your visit.**

Registered Charity no. 528892

# Access

Ikon aims to be fully accessible for disabled visitors. Wheelchair and lift available. Assistance dogs welcome. Fitted induction loop and portable loop for talks.

## Local accommodation

Hilton Garden Inn offers visitors a discount rate.

Visit [hilton.com](http://hilton.com), select Hilton Garden Inn, and enter n2771505 in Corporate Account.

# Getting to Ikon

Please note due to the transformation of Paradise Circus your journey to Ikon may be affected. Visit [birmingham.gov.uk/connected](http://birmingham.gov.uk/connected)

## Pedestrian route from New Street train station

From New Street station walk to Victoria Square, past the Town Hall and in front of the Birmingham Museum and Art Gallery onto Centenary Way. Continue through Centenary Square and the International Convention Centre (ICC). Walk over the bridge into Brindleyplace, and between Carluccio's and Slug & Lettuce. Alternatively turn left in front of the ICC and right onto Broad Street, then right into Oozells Street. Approximately 15 minute walk.

## By road

Birmingham is accessible by M5, M6, M40 and M42. Follow signs to the City Centre then brown tourist signs to ICC, Arena Birmingham and Brindleyplace.

## Car and bicycle parking

The nearest car park is Q-Park Brindleyplace on Brunswick Street (pre-book and quote IKON for 10% discount at [q-park.co.uk/parking/birmingham/q-park-brindleyplace](http://q-park.co.uk/parking/birmingham/q-park-brindleyplace)). Orange and blue badge holders may park on the double yellow lines on Oozells Street in accordance with badge guidelines. There is a bicycle rack near Ikon.